



TRANSFORMATION at King Street Church

Spiritually **alive**.
Relationally **connected**.
Missionally **engaged**.

Ephesians

2:4-5

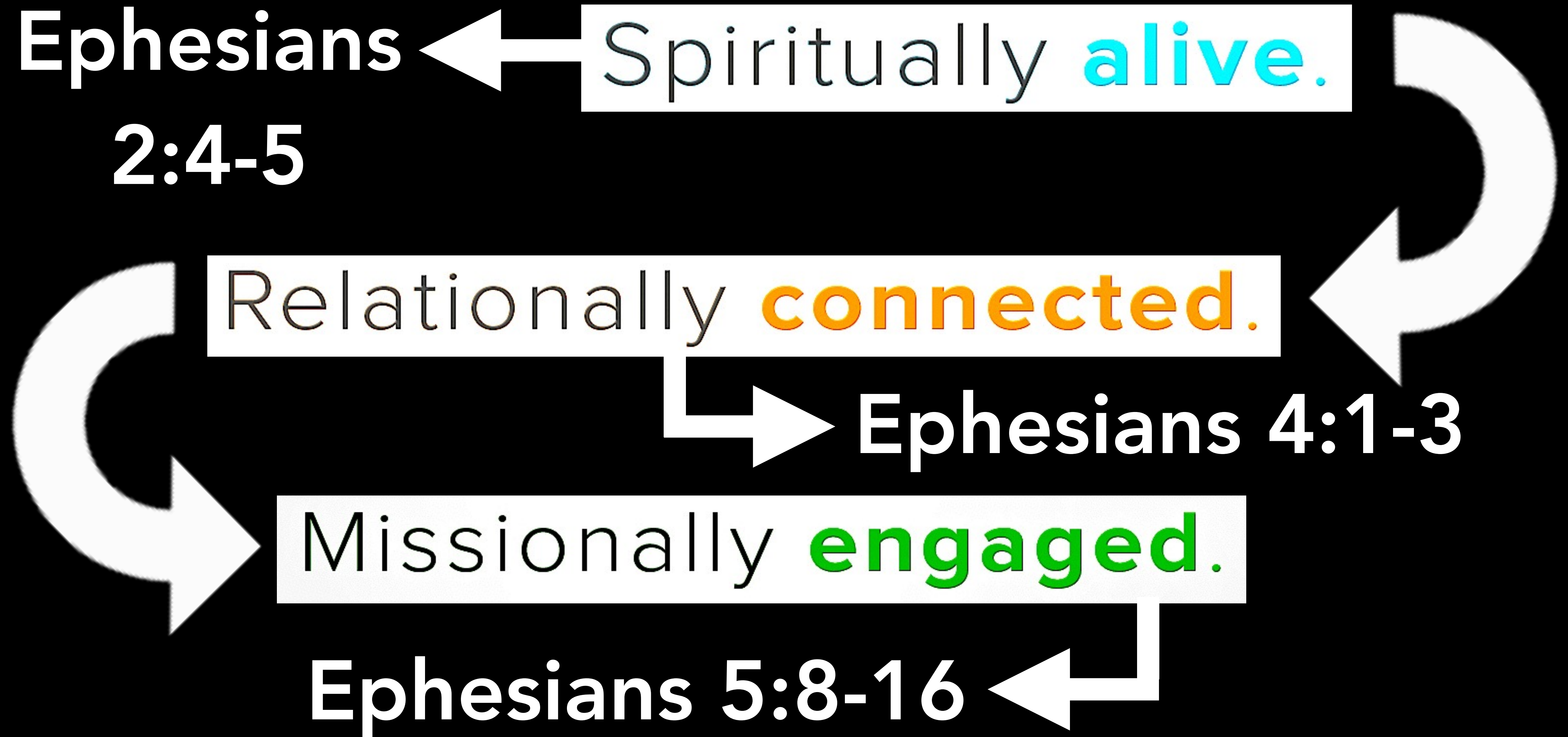
Spiritually **alive.**

Relationally **connected.**

Ephesians 4:1-3

Missionally **engaged.**

Ephesians 5:8-16



Missionally engaged.

**Taking the LIGHT of Christ
into the dark corners
of our community.**

**Taking the LIGHT of Christ
into the dark corners
of our community.**



- Hurting
- Lonely
- Addicted
- Oppressed
- In need of Hope

**Taking the LIGHT of Christ
into the dark corners
of our community.**



- Hungry & Thirsty**
- A Stranger**
- Needing Clothed**
- Sick**
- In Prison**

**Taking the LIGHT of Christ
into the dark corners
of our community.**



- Lost

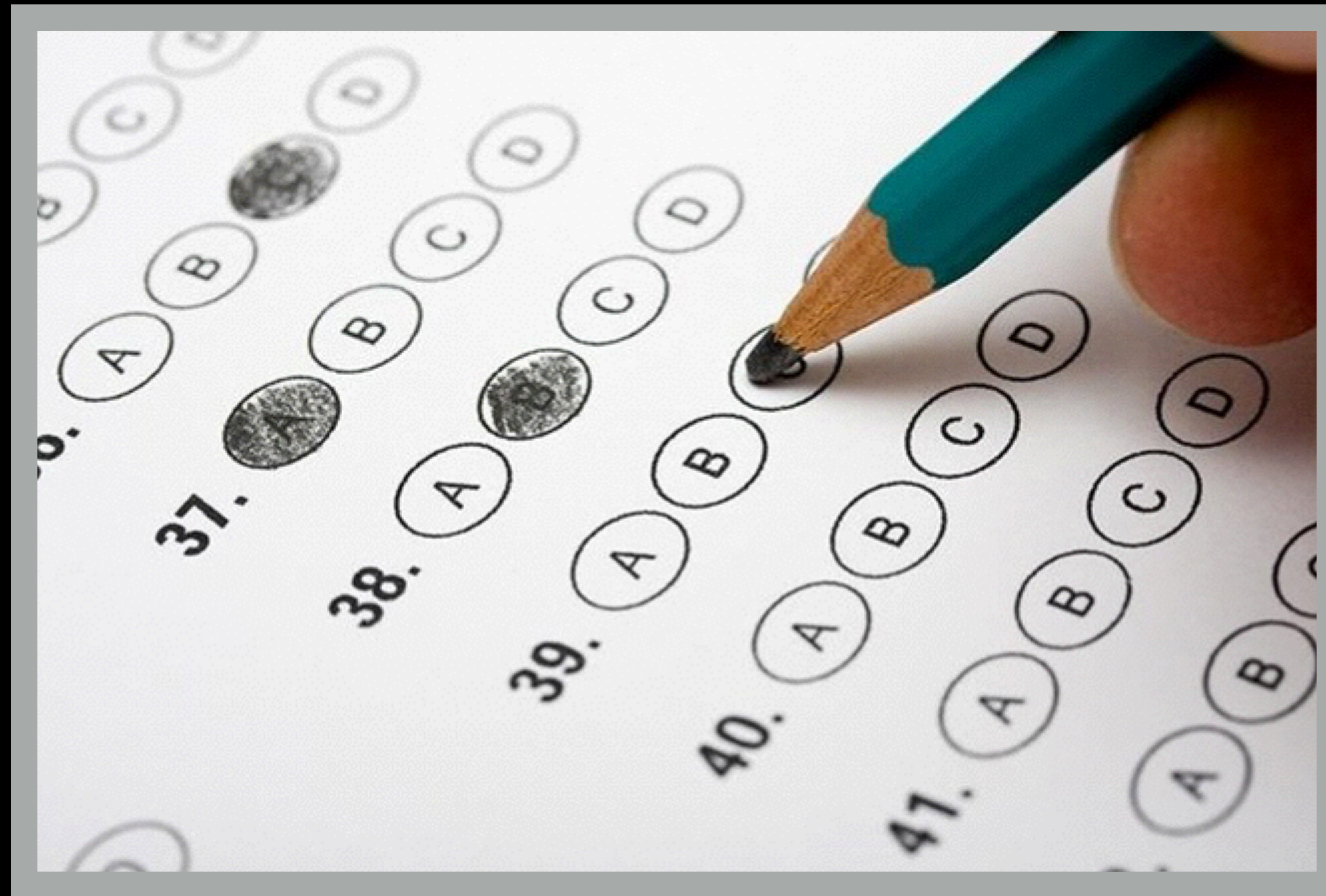
Luke 19:1-10



“Zacchaeus, hurry down. Today is my day to be a guest in your home.” Zacchaeus scrambled out of the tree, hardly believing his good luck, delighted to take Jesus home with him. Everyone who saw the incident was indignant and grumped, “What business does he have getting cozy with this crook?”

Luke 19:1-10

**This isn't just a
cool story about
a short guy
and a big tree.
This is how we're
supposed to live.**



**And this will be
on the final.**



**Does anyone here
like chocolate?**

Scene 1: Grace



Josephine makes her way for the first time into the chocolate shop... and is clearly troubled.

Vianne seems to know that Josephine has taken some chocolate, but chooses to show her grace and kindness.

Scene 2: The dark corner



Josephine lives in probably the darkest corner of the village.

Vianne pressed past the barriers, and takes some chocolate into her darkness. It's a beautiful act of kindness. (*"I'm going to your house today!"*)

Scene 3: *The sweet aroma*



**Vianne's act of kindness lingers long
after she leaves.**

**Scene 4: Would you like to
come in for some
chocolate?**



**A relationship has been established.
Josephine now knows that Vianne
cares about her.
I love how Vianne reaches out and
physically touches Josephine.**

Scene 5: *A safe place*



**When things seem the darkest,
Josephine knows that Vianne is there
for her—and that she can run to the
Chocolate Shop for help.**

This is God's plan for the church.

Some of us here today can identify with Josephine. Or Zacchaeus.

You've been living in some form of darkness.

Jesus is pursuing you, and inviting you to come in for some chocolate.

You are loved.

**All of us are called to to take the
light — or the chocolate! — into the
dark corners of our community.**

And that light is the Gospel.

2 Corinthians 4:2-6

“...By setting forth the truth plainly we commend ourselves to everyone’s conscience in the sight of God. And even if our gospel is veiled, it is veiled to those who are perishing. The god of this age has blinded the minds of unbelievers, so that they cannot see **the light of the gospel that displays the glory of Christ**, who is the image of God. For what we preach is not ourselves, but Jesus Christ as Lord, and ourselves as your servants for Jesus’ sake. For God, who said, ‘Let light shine out of darkness,’ made his light shine in our hearts to give us the light of the knowledge of God’s glory displayed in the face of Christ.”

**the light of the gospel
that displays the glory of Christ**



